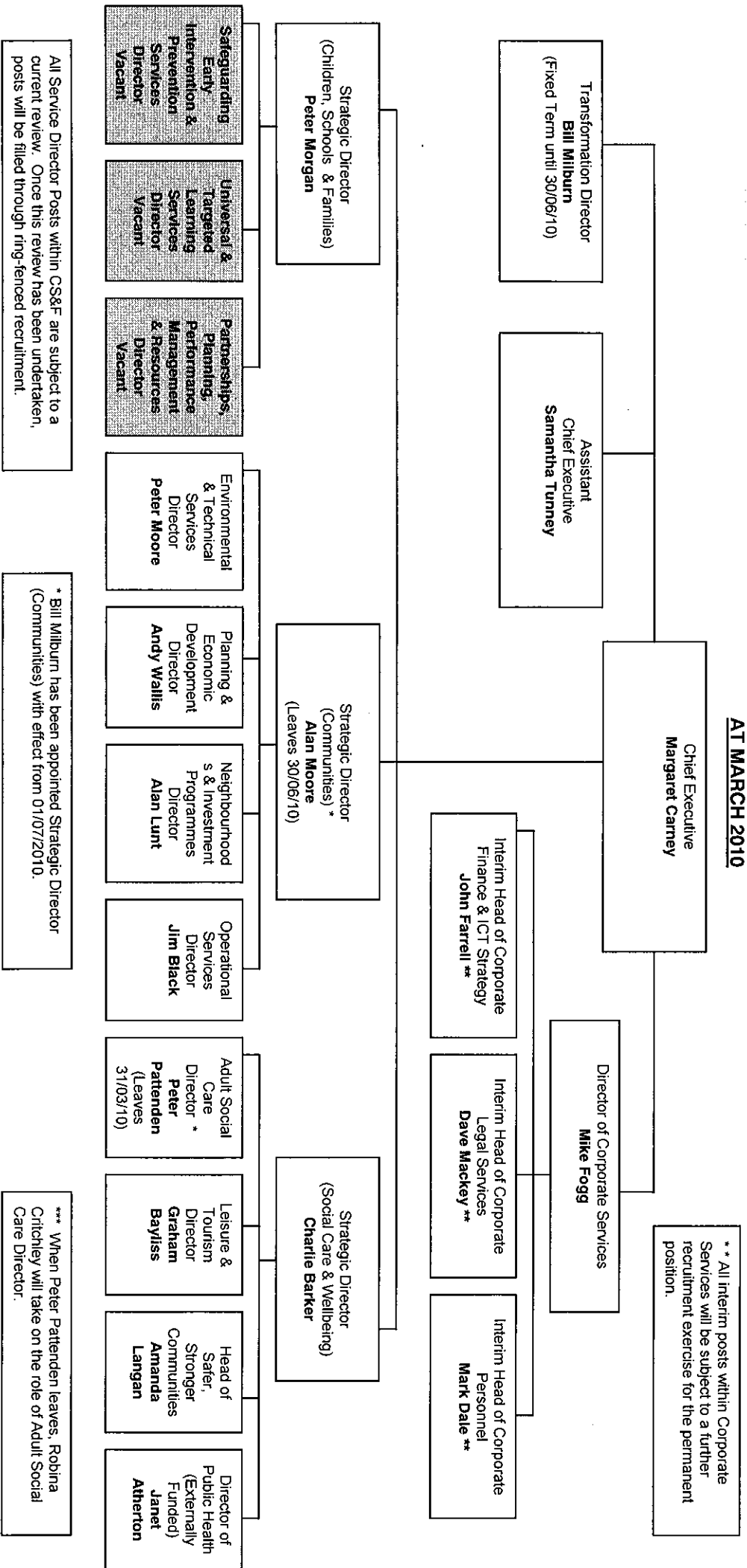


**SEFTON COUNCIL  
SENIOR MANAGEMENT STRUCTURE  
AT MARCH 2010**



\*\* All interim posts within Corporate Services will be subject to a further recruitment exercise for the permanent position.

All Service Director Posts within CS&F are subject to a current review. Once this review has been undertaken, posts will be filled through ring-fenced recruitment.

\* Bill Milburn has been appointed Strategic Director (Communities) with effect from 01/07/2010.

\*\*\* When Peter Pattenden leaves, Robina Critchley will take on the role of Adult Social Care Director.